

Specifications:

Concrete: 5,000 Psi @ 28 Days

Air Entrainment: Target 7%

Steel Reinforcement: ASTM A496 – A615

Grade 60 KSI

Design Loading: 300PSF

Floatation Forces

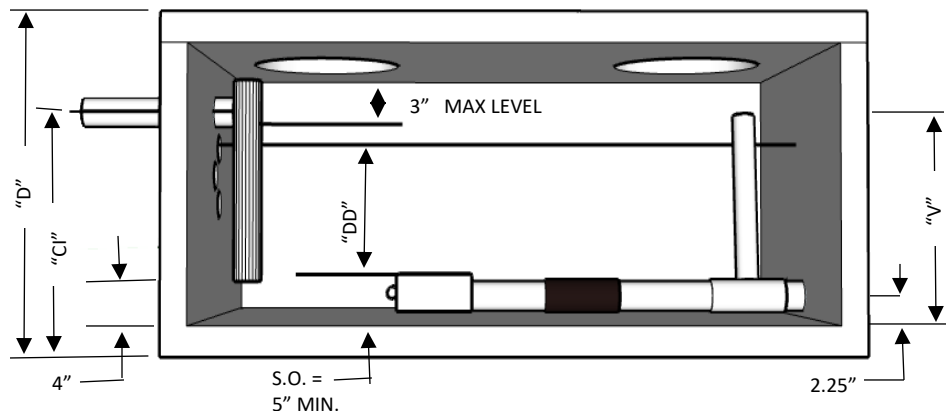
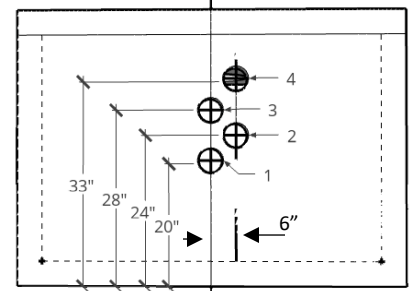
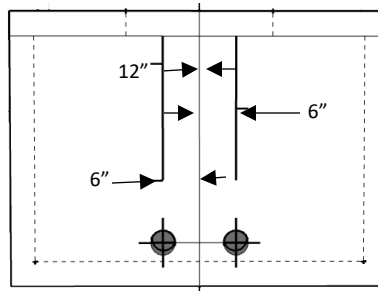
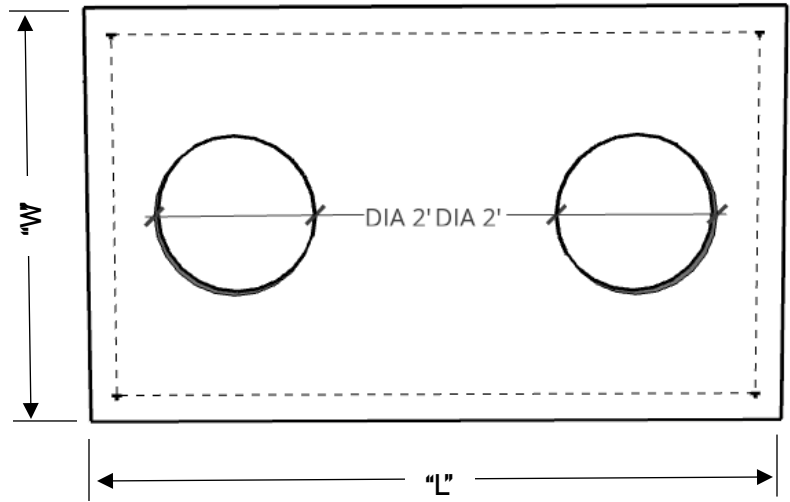
not accounted for

TYPE	"W"	"L"	"D"
"A"	44"	86"	36"
"B"	56"	104"	36"
"C"	62"	104"	44"

"A" FLOUT TANK				
CI	Use Inlet Number	DD	DOSE	V
27"	3	15"	182	23"
27"	3	12"	145	20"
22"	2	10"	121	18"
22"	2	8"	98	16"
18"	1	6"	73	14"
WEIGHT:		Tank Volume:		
TOP:	1,206 LBS.	145 GAL./LF		
BOTTOM:	3,606 LBS.	12.2 GAL/In.		
TOTAL:	4,812 LBS.			

"B" FLOUT TANK				
CI	Use Inlet Number	DD	DOSE	V
27"	3	15"	299	23"
27"	3	12"	239	20"
22"	2	10"	199	18"
22"	2	8"	160	16"
18"	1	6"	120	14"
WEIGHT:		Tank Volume:		
TOP:	1,875 LBS.	239 GAL./LF		
BOTTOM:	4,950 LBS.	20 GAL/In.		
TOTAL:	6,825 LBS.			

"C" FLOUT TANK				
CI	Use Inlet Number	DD	DOSE	V
33"	4	21"	471	29"
30"	4	18"	404	26"
28"	3	16"	358	24"
26"	3	14"	315	22"
24"	2	12"	269	20"
22"	2	10"	223	18"
20"	1	8"	180	16"
18"	1	6"	135	14"
WEIGHT:		Tank Volume:		
TOP:	2,062 LBS.	269 GAL./LF		
BOTTOM:	5,678 LBS.	22.4 GAL/In.		
TOTAL:	7,740 LBS.			



15" DD MIN. REQUIRED

D.D. = DRAWDOWN

S.O. = SHUTOFF

**** CAN BE USED FOR AN ALTERNATING FLOUT SYSTEM**